

SENSOTEX™

Beyond Measure



*Fuel & Water Level Sensor
Holding Tank Level Sensor
Truck Fuel Tank Sensor
AdBlue Sensor
Gauge Series*

www.sensotex.com.tw

SENSOTEX

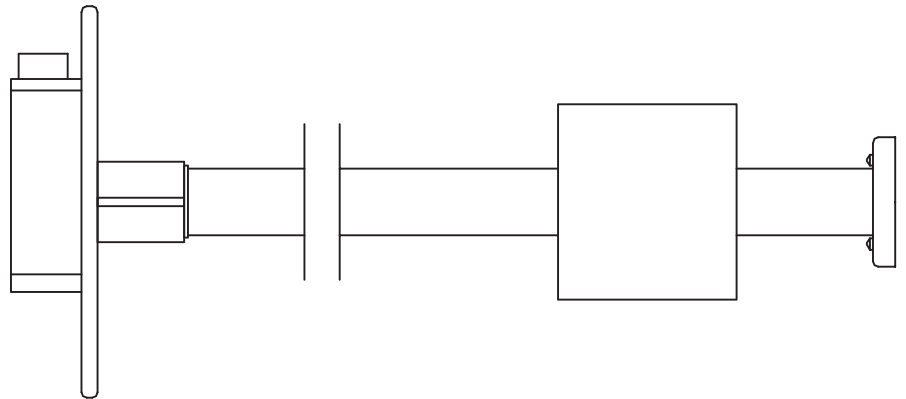
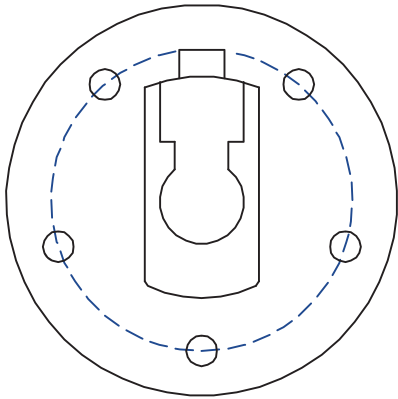
As a leading manufacturer of liquid level sensors, KUPO-SENSOTEX always devotes ourselves to offer professional sensing solutions and wide range of liquid level sensing products for many different fields including Automotive, Marine, Agriculture, Construction, and Power Generation.

With more than 20 years experience in design, producing, and marketing, we have established high reputation for offering fine quality products and tailor-made customer services. Besides, we obtained patents in Taiwan, Japan, China, United States, and Germany. Moreover, our production line is certified by ISO 9001, and various kinds of our products are CE certified. All proves the durability and reliability of our exclusive products.

KUPO-SENSOTEX dedicates ourselves to innovate, reform, and advance. Our mission is to offer satisfactory customer services, products with zero defects, and favorable rate of price. Our perspective is to establish long-term relationship with every customer by providing customized liquid level sensing solutions for specific needs. We are not only a supplier but a reliable partner. With sincere, we invite you to join us and set the pace for the future together.



KUPO CO., LTD.
6F, NO.4, Lane 609, Sec.5, Chung Shin Rd.,
San Chung District, New Taipei City, 24159, Taiwan
TEL:886-2 2999 1906
FAX:886-2 2999 1955
E-mail: sensotex@kupo.com.tw
Website: www.sensotex.com.tw



INDEX

Application	03 - 04
Fuel & Water Level Sensor	05 - 06
Holding Tank Level Sensor	07
S Series Fuel Sensor	08
SZ Series Fuel Sensor	09
AdBlue Sensor	10
Stainless Steel Gauge Series	12
Black Gauge Series	13 - 14
White Gauge Series	15
Other Switches & Accessories	16 - 18



Marine

Enjoying the spectacular view of the sea while in the tough environment, SENSOTEX sensor will be the dependable companion when surfing on the boundless sea before touching back down on the ground again.



Automotive

Driving your vehicle on the giant land and being charged with important task, SENSOTEX sensor will be your reliable partner on your way of completing every mission without worrying truck stopping because of the fail of the sensor.



Agriculture

Technological advancement provides useful tools for farmers to till the soil and look after the crops. Applying SENSOTEX sensors to tractors, sprayers, and tillage vehicles makes farmers concentrate on their works with reliable fuel level sensing solution.

Construction

Construction industry is used to depict that the related equipments, or every single component, should be durable and reliable. SENSOTEX sensor has been developed to be strong enough to bear intense vibration from powerful engine and off-road surfaces.



SENSOR SERIES



SFW-01



- Application: Fuel / Diesel / Water
- Material: Aluminum Header + Stainless Steel #304 Tube
- Resistance Range: Customization
- Assembly Way: 1-1/4" BSP thread
- Accessory: Rubber O Ring



SFW-02



- Application: Fuel / Diesel / Water / AdBlue
- Material: Stainless Steel # 316
- Resistance Range: Customization
- Assembly Way: 1-1/4" BSP thread
- Accessory: Rubber O Ring



SFW-03



- Application: Fuel / Diesel / Water
- Material : Aluminum
- Resistance Range: Customization
- Assembly Way: SAE 5 Holes
- Accessory: Rubber Gasket



SFW-04



- Application: Fuel / Diesel / Water / AdBlue
- Material: Stainless Steel # 316
- Resistance Range: Customization
- Assembly Way: SAE 5 Holes
- Accessory: Rubber Gasket

US Patent NO.: US 6,185,994 B1 / US Patent NO.: US 5,862,702



SFW-05



- Application: Water
- Material: ABS
- Resistance Range: Customization
- Assembly Way: SAE 5 Holes
- Accessory: Rubber Gasket



SFW-06



- Application: Fuel / Water
- Material: Nylon
- Resistance Range: 240~30ohm
- Assembly Way: SAE 5 Holes
- Accessory: Rubber Gasket
- Available Size: 4"-10"



SFW-07



- Application: Water
- Material: ABS
- Resistance Range: Customization
- Assembly Way: 1-1/4" BSP thread
- Accessory: Rubber O Ring



SFW-08



- Application: Fuel / Diesel / Water
- Material: Aluminum
- Resistance Range: Customization
- Assembly Way: SAE 5 Holes
- Accessory: Rubber Gasket



SFW-09

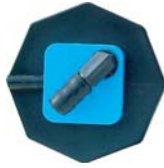


- Application: Fuel / Diesel / Water
- Material: Aluminum
- Resistance Range: Customization
- Assembly Way: Quick Twisted Bayonet
- Accessory: Rubber O Ring

US Patent NO.: 5,718,146 / US Patent NO.: 5,481,911



SHF-01



- Application: Sewage / Waste Water
- Material: ABS
- Resistance Range: Customization
- Assembly Way: 2"NPT Thread
- Accessory: Rubber O Ring
- Available Size: 113 / 217 / 321 / 425 mm



SHF-03



- Application: Sewage / Waste Water
- Material: ABS
- Resistance Range: Customization
- Assembly Way: 6 holes
- Accessories: Rubber Gasket
+ Stainless Steel Screws
- Available Size: 113 / 217 / 321 / 425 mm



SHF-04



- Application: Sewage / Waste Water / Fuel
- Material: Stainless Steel #316
- Resistance Range: Customization
- Assembly Way: 6 Holes
- Accessories: Rubber Gasket
+ Stainless Steel Screw
- Available Size: 111 / 214 / 320 / 423 mm
- Available Size: 100-1500 mm without Outside Tube



SHF-04U



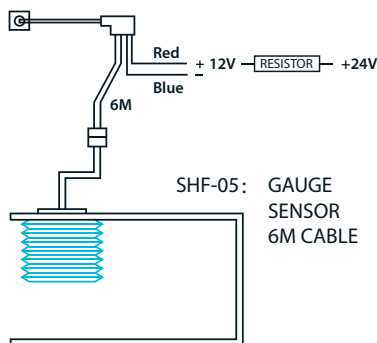
- Application: Sewage / Waste Water / Fuel
- Material: Stainless Steel #316
- Resistance Range: Customization
- Assembly Way: 1-1/4" BSP Thread
- Accessory: Rubber O Ring



SHF-05

Sewage Tank Controller

- Application: Sewage / Waste Water
- Material: Silicon
- Accessory: 6M Electric Wire



Diam: 52 mm Flange: Dia.80 mm
Depth: 60 mm Tank-Hole: 50 mm
Power: 60 mA Length: 160 mm
Cable: 0.3 m

Optional Gauge Meter Indicator



HW-01

Without on/off switch



HW-01S

With on/off switch

S series fuel level sensor is the fuel sending and level sensing unit for trucks and buses, especially for European vehicles. In addition to providing precise fuel level measurement, the S series is also designed with one piece body integrated with fuel suction & return pipe, fuel heating pipe, and reed switch pipe which guarantees the robustness of the sensor and makes it strong enough to bear intense vibration from engine and road surface.

S Series



SH Series



- Application: Fuel / Diesel / Bio-Diesel
- Material: Aluminum
- Resistance Range: Customization
- Assembly Way: Quick Twisted Bayonet
- Accessories: Rubber O Ring

Features:

Fuel Filter / Fuel Sending & Return / Fuel Heating Pipe
Air Vent / Low Level Alarm (Optional)
Replaceable Float and Filter

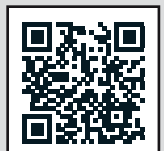
SH sensor is the variant of the S sensor. It is designed for SCANIA HPI engine with two fuel suction and return pipes making it able to bear strong fuel flow from High Pressure Injection engine.

* If the S/SH series fuel sender will be applied to multiple fuel tanks system, please notify us.



YOUTUBE

REED SWITCH
IN LIQUID LEVEL SENSOR-SENSOTEX



The SZ series fuel sensor is economical fuel sensor designed for light trucks, agricultural and construction vehicles. Considering its wide range application, the SZ fuel sender is provided with SAE 5 holes and quick twisted bayonet assembly. Although with economical design, the SZ fuel sender still provides precise fuel level measurement, fuel sending function, and optional fuel filter and air vent.

- Features:
- Fuel Suction and Return
- Fuel Filter (Optional)
- Air Vent (Optional)
- Low Level Alarm (Optional)

- The SZF series is the variant of the SZ sensor. Equipped with fuel filter, it screens out the dirt in the fuel and guarantees the fuel is clean when being injected into engine.



SZ-A
SZF-A



- Application: Fuel / Diesel / Bio-Diesel
- Material: Aluminum Header & Stainless Steel #304 Sensor Tube
- Resistance Range: Customization
- Assembly Way: SAE 5 Holes
- Accessory: Rubber Gasket



SZ-B
SZF-B



- Application: Fuel / Diesel / Bio-Diesel
- Material: Aluminum Header & Stainless Steel #304 Sensor Tube
- Resistance Range: Customization
- Assembly Way: Quick Twisted Bayonet
- Accessory: Rubber O Ring

As European emission standards requiring strict measures, almost every commercial vehicle is required the employment of Selective Catalytic Reduction (SCR) system. SENSOTEX, as one of the leading manufacturer of liquid level sensor, offers AdBlue sensor which supplies the SCR equipped trucks and buses, and makes an important contribution to efficient SCR operation.



ADV



- Application: AdBlue / DEF
- Material: Stainless Steel #304
- Resistance Range: Customization
- Assembly Way: Quick Twisted Bayonet
- Accessory: Rubber O Ring
- Water circuit from coolant system for heating



SENSOTEX liquid level sensors can be applied to most types of fluid such as fuel, diesel, water, waste water, or even the chemical fluid. We specialize in reed switch liquid level sensors and offering tailor-made liquid level sensing solution. Looking for a reliable partner? SENSOTEX is your only choice.



GAUGE

A gauge is not only for measuring, but also about so much more to provide precise indication. SENSOTEX provides various kinds of gauges that are able to precisely indicate the water and fuel level, water and fuel temperature, oil pressure, battery volts, amps, rudder angle, and more. Those gauges are available in black or white plastic bezel and stainless steel bezel. Choose our gauges, and they will be your reliable partners.

FEATURES

- IP65 protection rating for whole gauge variant.
- Excellent fog resistance performance.
- Background light.
- Option of analog indication or digital indication.
- Default working voltage: 12V.
 - Also Compatible with 24V.
 - Require an extra resistor for the cross coil type of gauge to work with 24V system.

Below gauges have: Cut-out diameter 52 mm / Outside diameter: 57 mm



EMP-03-BS

Digital Water Level Gauge

- Power: 12V or 24V
- Resistance Range:
Ω0~180 or Ω240~30



EMP-04-BS

Digital Fuel Level Gauge

- Power: 12V or 24V
- Resistance Range:
Ω0~180 or Ω240~30



EMP-07-BS

Digital Oil Temperature Gauge

- Scale Calibration: 0~100°C
- Power: 12V or 24V



EMP-08-BS

Digital Water Temperature Gauge

- Scale Calibration: 0~100°C
- Power: 12V or 24V



EMP-11-BS

Digital Tachometer 4000 RPM

- Power: 12V or 24V
- For Diesel Engine



EMP-13-12BS

Digital Voltmeter

- Power: 12V



MP-03-BS

Water Level Gauge

- Power: 12V or 24V
- Resistance Range:
Ω0~180 or Ω240~30
- Background light



MP-04-BS

Fuel Level Gauge

- Power: 12V or 24V
- Resistance Range:
Ω0~180 or Ω240~30
- Background light



MP-08-BS

Water Temperature Gauge

- Scale Calibration: 0~100°C
- Power: 12V or 24V
- Background light



MP-09-50BS

Ampere Meter 50A

- Power: 12V or 24V
- Background light



MP-11-BS

Tachometer 4000 RPM

- Power: 12V or 24V
- For Diesel Engine
- Background light



MP-13-12BS

Voltmeter

- Power: 12V
- Background light

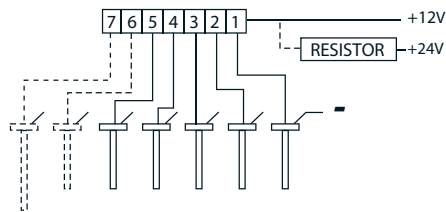
Below round gauges have: Cut-out diameter 52 mm / Outside diameter: 64 mm

Multiple Tanks Indicator Panel



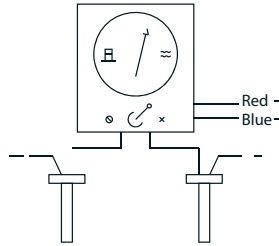
MP-01

- This panel covers up to 7 tanks
- Fog-proof indicating gauge
- $\Omega\sim 180$ or $\Omega 240\sim 30$



MP-02

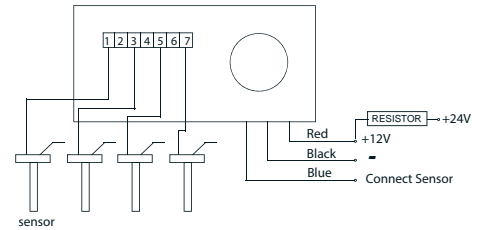
- This panel covers up to 2 tanks
- Fog-proof indicating gauge
- $\Omega\sim 180$ or $\Omega 240\sim 30$



MP-15

- This panel covers up to 7 tanks
- Fog-proof indicating gauge

- . Key-Operation Panel
- . User Friendly
- . Pleasing to Eye
- . Economical, design can be installed in minutes
- . $\Omega\sim 180$ or $\Omega 240\sim 30$



MP-03

- Water Level Gauge
- Power: 12V or 24V
 - Resistance Range: $\Omega\sim 180$ or $\Omega 240\sim 30$



MP-04

- Fuel Level Gauge
- Power: 12V or 24V
 - Resistance Range: $\Omega\sim 180$ or $\Omega 240\sim 30$



MP-05

- Holding Tank Level Gauge
- Power: 12V or 24V
 - Resistance Range: $\Omega\sim 180$ or $\Omega 240\sim 30$



MP-06

- Gauge With Great Brightness
- For Water / Fuel / Holding Tank
 - Includes 3 pcs of PC Board, 1 pc of White LED and 4 pcs of Red LED
 - Power: 12V or 24V



MP-07

- Fuel Temperature Gauge
- Scale Calibration: 0~100°C
 - Power: 12V or 24V



MP-08

- Water Temperature Gauge
- Scale Calibration: 0~100°C
 - Power: 12V or 24V



MP-09

Ampere Meter

- Scale Calibration: 50A or 80A
- Power: 12V or 24V



MP-10

Hour Meter

- Power: 12V or 24V



MP-11

Tachometer 4000 RPM

- Power: 12V or 24V
- For Diesel



MP-12

Tachometer 8000 RPM

- Power: 12V or 24V
- For Petroleum



MP-13

Voltmeter

- Power: 12V or 24V



MP-14

Rudder Angle

- Compatible with RS-01
- Power: 12V or 24V



MP-16

Oil Pressure Gauge 10 Bar

- Volt: 12V or 24V



MP-07S

Temperature Sensor

- Compatible with MP-07 and MP-08



MP-16S

Oil Pressure Sensor

- Compatible with MP-16

YOUTUBE

SENSOTEX LIQUID LEVEL SENSOR AND GAUGE SERIES



Below gauges have: Cut-out diameter 52 mm / Outside diameter: 64 mm



MP-03W

Water Level Gauge

- Power: 12V or 24V
- Resistance Range:
 $\Omega 0 \sim 180$ or $\Omega 240 \sim 30$



MP-04W

Fuel Level Gauge

- Power: 12V or 24V
- Resistance Range:
 $\Omega 0 \sim 180$ or $\Omega 240 \sim 30$



MP-05W

Holding Tank Level Gauge

- Power: 12V or 24V
- Resistance Range:
 $\Omega 0 \sim 180$ or $\Omega 240 \sim 30$



MP-09W

Ampere Meter

- Scale Calibration: 50A or 80A
- Power: 12V or 24V



MP-13W

Voltmeter

- Power: 12V or 24V



MP-14W

Rudder Angle

- Compatible with RS-01
- Power: 12V or 24V

SENSOTEX™
Beyond Measure



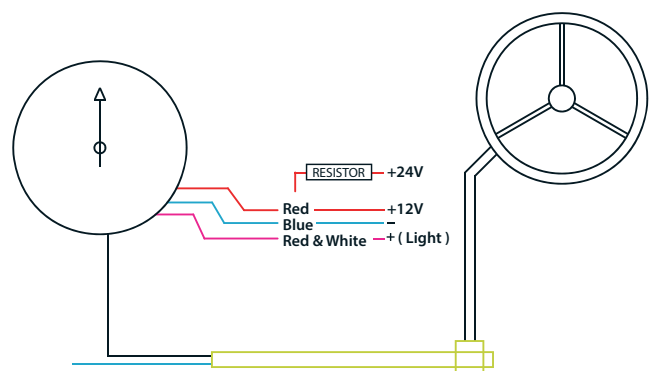
OTHER SWITCHES & ACCESSORIES

Rudder Sensor



RS-01

- Diameter: 12 mm
- Depth: 330 mm
- Power: 12-24 VDC
- Resistance: 68 ~ 916 Ω
- Sensor: Stainless Steel #304 with 50 cm Cable
- Compatible with MP-14 and MP-14W

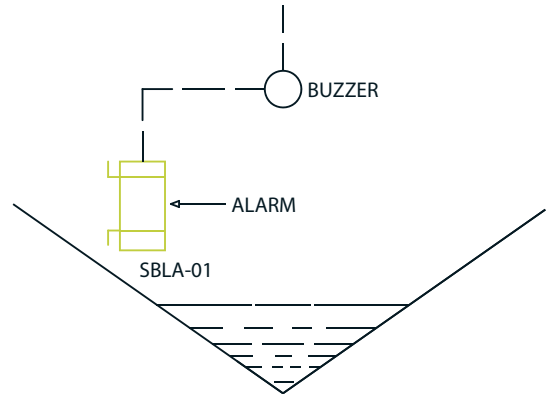


Boat Leakage Alarm (Sensor) + Buzzer



SBLA-01

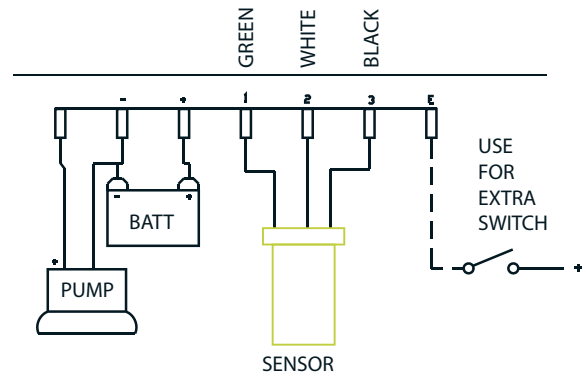
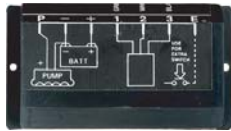
Put the sensor in the bilge-level without water. If unexpected water reaches the warning line, the buzzer will sound the alarm. Insure better safety when sailing.



Boat Bilge Pump-Switch

SBLA-02

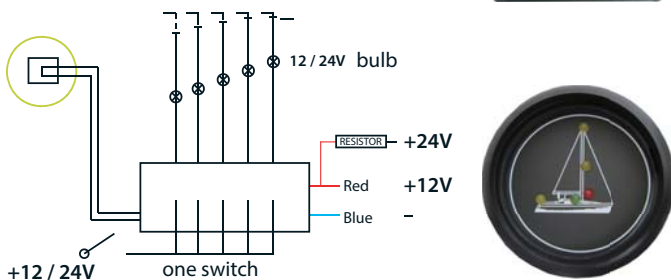
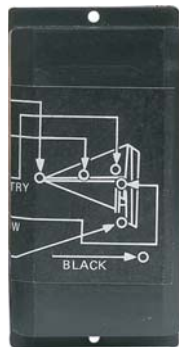
A boat bilge pump-switch can help you stay in better safety while on board. If unexpected water reaches the warning line, a switch will automatically start pump to draw water out.



Navigation-Light Control

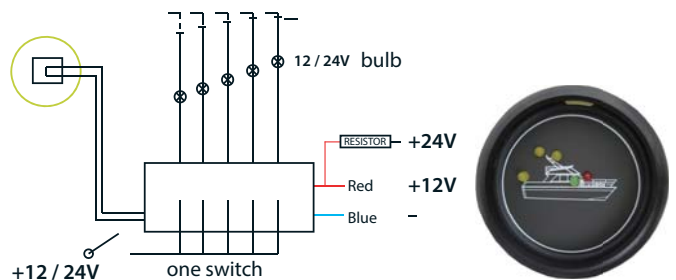
NC-01

- Applied in Sailboat
- Diameter: 52 mm
- Depth: 60 mm
- Power: 60 mA / 12-24 VDC



NC-02

- Applied in Yacht
- Diameter: 52 mm
- Depth: 60 mm
- Power: 60 mA / 12-24 VDC





SA-01

Adapter with Gasket

(for sensor with female 1-1/4" BSP thread)

- Inside Hole Mounting: US Standard
- Outside Hole Mounting: EU Standard
- Material: Nylon
- Specified Sensor:
SFW-01 / SFW-02 / SFW-07



SA-02

Closed Flange

- Material: Nylon
- Specified Sensor:
Depend on customers' needs.



SA-03

One hole Flange

- Material: Nylon
- Specified Sensor:
SFW-01 / SFW-02 / SFW-07



SA-04

Adapter kit

(for sensor with 5 holes)

- Material: Nylon
- Accessories: 5 mounting screws
- Specified Sensor:
SFW-03 / SFW-04 / SFW-05



SHFA-01

Flushing Kit

- Used with
SHF-01 / SHF-03 / SHF-04



SHFA-02

6M Cable

- Used with SHF-05



MPA-01

Square Bezel

- Compatible with VDO
Square Frame



SBLAA-01

Buzzer

- Used with SBLA-01



SFWA-02

Gasket

- Used with level sensor
with SAE 5 holes assembly



TEL:886-2 2999 1906

FAX:886-2 2999 1955

E-mail: sensotex@kupo.com.tw

Website: www.sensotex.com.tw



KUPO CO., LTD.

6F, NO.4, Lane 609, Sec.5, Chung Shin Rd.,

San Chung District, New Taipei City, 24159, Taiwan